

bre

**Weathertightness test to
BS 6375: Part 1: 2009 on
a Smart Architectural
Aluminium Smartwall
rebedded single leaf door**

Prepared for: Mr. D. White

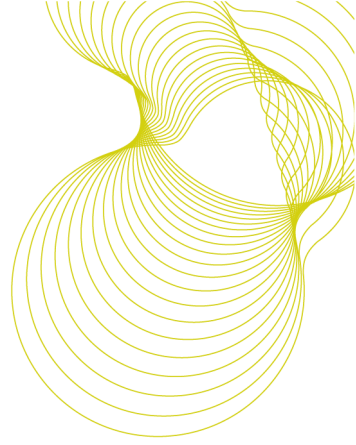
Smart Architectural Aluminium

29 November 2012

Test report number 282473-3



0578



Tested on behalf of BRE by:

Name Malcolm Pound
Position Senior Consultant and Laboratory Manager, Construction, Building Technology
Date 14 November 2012
Signature *M. C. Pound*

Prepared on behalf of BRE by:

Name Malcolm Pound
Position Senior Consultant and Laboratory Manager, Construction, Building Technology
Date 29 November 2012
Signature *M. C. Pound*

Approved on behalf of BRE

Name Dr. Paul Blackmore
Position Associate Director, Actions, Building Technology
Date 29 November 2012
Signature *P. Blackmore*

BRE
Garston
WD25 9XX
T + 44 (0) 1923 664000
F + 44 (0) 1923 664010
E enquiries@bre.co.uk
www.bre.co.uk

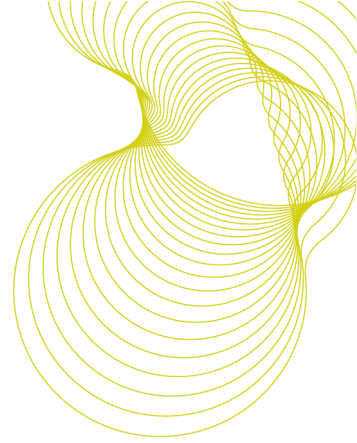
BRE is not UKAS accredited to make
opinions and interpretation. Any opinions
and interpretations included as part of this
report are clearly marked as such.



0578

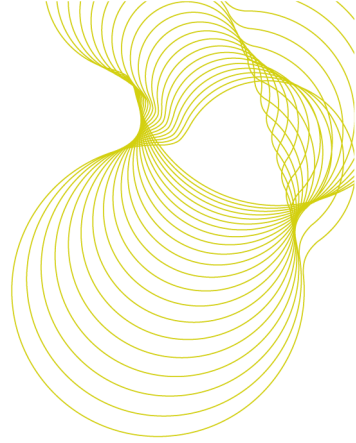
This report may only be distributed in its entirety and in accordance with the terms and conditions of the contract. Test results relate only to the items tested. BRE has no responsibility for the design, materials, workmanship or performance of the product or items tested. This report does not constitute an approval, certification or endorsement of the product tested.

This report is made on behalf of BRE. By receiving the report and action on it, the client – or any third party relying on it – accepts that no individual is personally liable in contract, tort or breach of statutory duty (including negligence).



Contents

1	Introduction	4
2	Details of tests carried out	5
3	Classification of results	6
4	Test specimen	7
5	Test rig and preparatory procedures	8
6	Summary of test results	9
7	Conclusions	10
8	References	11
	ANNEX A. Weathertightness test results	12



1 Introduction

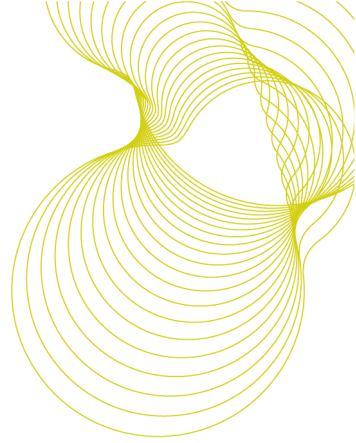
At the request of Mr. D. White of Smart Architectural Aluminium, Technical Department, Arnolds Way, Yatton, Bristol, North Somerset, BS49 4QN, BRE issued proposal number 132241 on 21 September 2012. The proposal was accepted on 26 September and BRE tested a specimen Smartwall rebated single leaf door on the 14 November 2012.

The tests to methods in BS 6375: Part 1: 2009, BS EN 1026¹, 1027² and 12211³ measure the weathertightness of the specimen in terms of air permeability, watertightness and resistance to wind load respectively. Classification of the results is based on BS 6375: Part 1: 2009⁴ and BS EN 12207⁵, 12208⁶, 12210⁷.

The tests on the specimen were carried out by Mr. M. C. Pound under the BRE Standard Terms and Conditions of Business for testing and to the UKAS BRE Specific Procedures Series F, as BRE Job number 282473 in project number CV5692. The tests were witnessed by:

Mr. D. White Technical Department, Smart Architectural Aluminium.

Mr. M. Walford Technical Department, Smart Architectural Aluminium.



2 Details of tests carried out

BS 6375: Part 1: 2009 specifies that the air permeability test is performed under both positive and negative test pressures and that the average of the measurements defines the results. It also specifies that water tightness test method A is used and that deflections measured during the resistance to wind load test do not exceed 1/150 of the span. The weathertightness test comprised of three parts in the sequence:

1. Air permeability to BS EN 1026: 2000; by application of a series of test air pressure differentials across the specimen with measurement of the air permeability of it at each pressure step. The maximum positive and negative pressure differential was 300 Pa reached in pressure steps of 50, 100, 150, 200, 250 and 300 Pa.
2. Watertightness to BS EN 1027: 2000; by applying specified amounts of water spray to the outside face of the specimen while incrementally increasing the air pressure differential across it. The test pressure, time and position of any water penetration are recorded. The maximum positive air pressure differential was 150 Pa. Pressure (Pa)/time (min) steps were 0/15, 50/5, 100/5 and 150/5.
3. Resistance to wind load to BS EN 12211: 2000; by application of a series of positive and negative test air pressures. Measurements and inspections are made to assess relative frontal deflection and resistance to damage from wind loads.

The resistance to wind load test includes a deflection test, a repeated pressure test and operational test, an air permeability test and finally a safety test. For the purpose of the resistance to wind load test three test pressures are defined:

P1 applied to measure the deflections of parts of the test specimen.

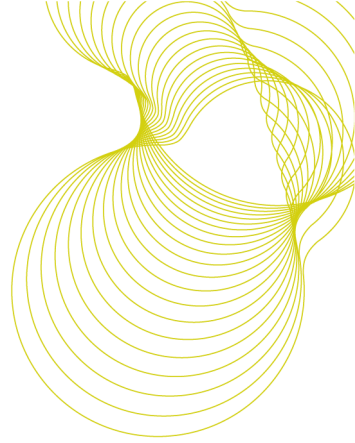
P2 50 cycles of pulsating pressure to assess performance under repeated wind loads.

P3 applied to assess the safety of the test specimen under extreme conditions.

The values of P1, P2 and P3 are related as follows: $P2 = 0.5P1$, $P3 = 1.5P1$.

For these tests the values are: $P1 = 2000$ Pa, $P2 = 1000$ Pa and $P3 = 3000$ Pa.

Note: The repeat air permeability test is an integral part of the resistance to wind load test and its significance is as an indicator of damage that may occur during that test.



3 Classification of results

BS 6375: Part 1: 2009 classifies the results for products in the UK. For a door to be included in an exposure category the appropriate test pressures for air permeability, watertightness and resistance to wind shall be attained or exceeded. The relevant product standard BS EN 14351-1:2006⁸ also states that classification of air permeability is based on the averages of the positive and negative air leakage values at each pressure step.

The specimen was tested to a UK exposure category of 2000 (2000 Pa). The classifications set in BS 6375: Part 1: 2009 for a UK exposure category of 2000 for windows are: Air permeability at Class 2/300 Pa when tested to 300 Pa, water tightness at Class 5A/200 Pa and resistance to wind load at Class A4 at P1 2000 Pa, P2 1000 Pa and P3 3000 Pa.

According to clause 4 of BS 6375:Part 1: 2009 'Doorsets that are tested and classified with a wind load greater than 1200 (Pa) shall be classified in accordance with BS EN 12207, 12208 and 12210'.

When averages of the measurements of air permeability per square metre and length of the opening joints on the specimen give rise to adjacent air permeability classes then the specimen shall be classified in the most favourable class (according to BS EN 12207 Clause 4.6).

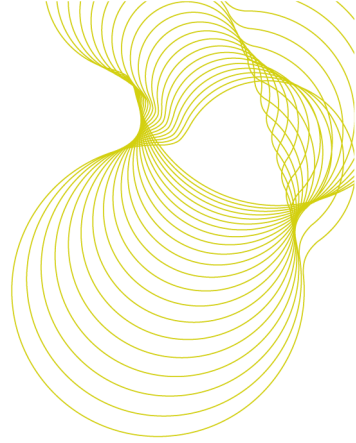
The BS EN classifications are explained below:

Air permeability: BS EN 12207: 1999. The classification is based on a comparison of the air permeability of the test specimen related to both overall area and length of opening joint. There are four classes; Class 4 is applicable to the most airtight specimens while Class 1 describes those with most air leakage. To meet any class the measured air permeability of the specimen must not exceed the upper limit at any test pressure step in that class.

Watertightness: BS EN 12208: 2000. The classification is based on a comparison of the watertightness of the test specimen related to test pressures and duration of the test. There are nine classes; 1A/1B up to 9A for test pressures from 0 Pa to 600 Pa. For specimens that remain watertight over 600 Pa for 5 minutes a class Exxx is used. The xxx is the maximum test pressure e.g. 750 Pa. To meet any class the specimen must remain watertight for 5 minutes up to and at the test pressure set for that class.

Resistance to wind load: BS EN 12210: 1999. The classification is based on a comparison of the resistance to wind loads of the test specimen when subjected to test pressures P1, P2 and P3. There are five classes; 1 up to 5 for P1 test pressures from 400 Pa to 2000 Pa. For specimens that are tested to P1 pressures exceeding 2000 Pa a class Exxxx is used. The xxxx is the actual test pressure P1 used e.g. 2400 Pa. To achieve any class the resistance of the specimen to wind load must meet all the requirements for that class.

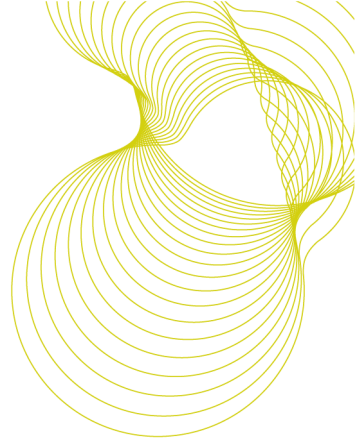
Note: This report has results for air permeability under positive and negative test pressures and a graph showing the average air permeability for them at each pressure step.



4 Test specimen

The general details about the test specimen supplied by Smart Architectural Aluminium for these tests are given below:

- Type:** Aluminium frame members with a single, open outward glazed leaf. Reference: Smart Systems Smartwall rebated single leaf door; specimen is 1100 mm wide x 2310 mm high. Drawings and photographs in the Annex of this report show cross sections of the frame members and door details.
- Frame:** Aluminium sections.
- Glazing:** The leaf is glazed internally with an insulating glass unit with 4 mm thick toughened glass, a 20 mm wide air gap and 4 mm thick toughened glass. Aluminium snap-in beads retain the glazing and the glazing seals.
- Seals:** Two rows of brush type seal all around the door leaf and a compression type seal on three sides of the door frame.
- Hardware:** Two Adamrite Sentinel hook locks along the handle side, key operated; one above the handle and one below.
- Drainage:** There are five slots in the threshold and two in the outer face of the leaf. There are weatherhoods over the top and bottom most horizontal opening joints.
- Fixings:** For these tests the specimen was fixed with screws and sealed into a timber surround frame.
- Dimensions:** 1100 mm wide x 2310 mm high (overall). Area: 2.54 m²
Length of opening joint = 6.34 m



5 Test rig and preparatory procedures

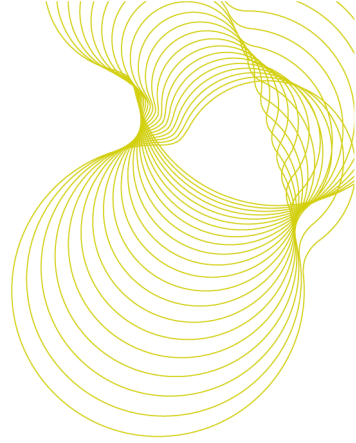
The test specimen was conditioned for at least 4 hours within temperature and humidity ranges specified in the test standards of 10°C to 30°C and 25% to 75% RH respectively.

The water temperature in the watertightness test was within the specified range of 4°C to 30°C.

The specimen was mounted in the BRE test rig 'G', to form one wall of a pressure box, with the outdoor face enclosed in the box.

A spray bar with three full circular cone nozzles was mounted in the pressure box to apply water to the outside face of the specimen. The water flow rate per nozzle was 2 L/min in accordance with BS EN 1027 spraying method 1A.

Transducers were mounted on independent supports to measure deflections of a frame member. Deflections were measured on the span at the positions indicated in Figure A3.

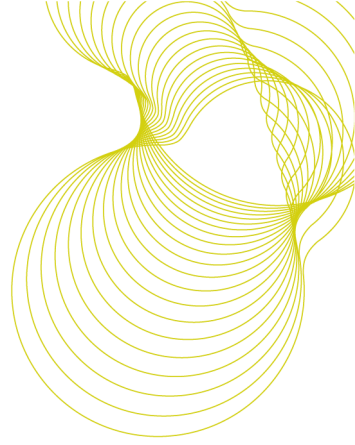


6 Summary of test results

The test results are summarised in Table 1 below. Figures show detail of the Smartwall rebated single leaf glazed door and detailed results are given in Annex A.

BS	Air permeability		Watertightness		Resistance to wind loads	
	Requirements	Results	Requirement	Results	Requirements	Results
BS 6375	Class 2 at 300 Pa	Met the requirements of Class 2 for the average of positive and negative test results	Class 4A at 150 Pa	Class 4A at 150 Pa Met Class 7A	Class A5 P1 = 2000 Pa P2 = 1000 Pa P3 = 3000 Pa	Met all of the requirements for Class A5

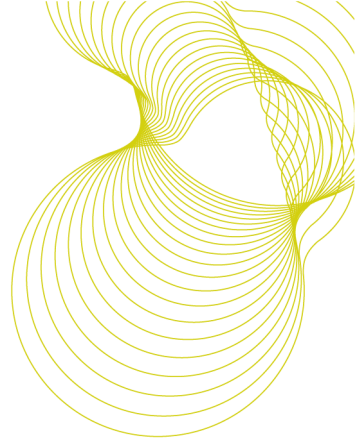
Table 1. Summary of weathertightness test results



7 Conclusions

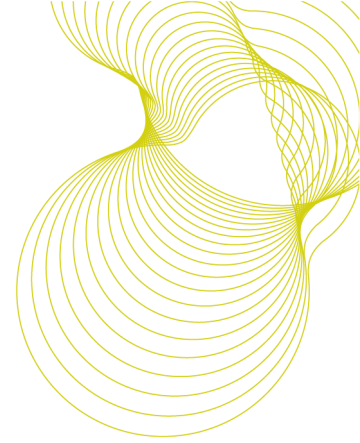
When the specimen Smart Architectural Aluminium Smartwall rebated single leaf glazed door 1100 mm wide x 2310 mm high was tested to the standards described herein to a UK exposure category '2000' it was found to be:

- Sufficiently airtight to attain Class 2 based on the averages of results under positive and negative test pressures thus meeting the BS 6375: Part 1: 2009 requirements for Class 2 at 300 Pa.
- Resistant to water penetration using method 1A to Class 4A up to and at 150 Pa thus meeting the BS 6375: Part 1: 2009 requirements for Class 3A at 100 Pa. Also meets the Class 4A requirement up to and at 150 Pa in BS EN 12208.
- Resistant to wind loads of ± 2000 Pa causing deflections less than 1/150 of the span of a frame member. Resistant to repeated pressure cycles of ± 1000 Pa and able to sustain the corresponding safety test pressure of ± 3000 Pa. The overall classification for resistance to wind load is Class A5 thus meeting the requirements of BS 6375: Part 1: 2009.



8 References

1. BS EN 1026: 2000. Windows and doors – Air permeability – Test method. British Standards Institution, London.
2. BS EN 1027: 2000. Windows and doors – Watertightness – Test method. British Standards Institution, London.
3. BS EN 12211: 2000. Windows and doors – Resistance to wind load – Test method. British Standards Institution, London.
4. BS 6375: Part 1: 2009. Performance of windows and doors – Classification for weathertightness and guidance on selection and specification
5. BS EN 12207: 2000. Windows and doors – Air permeability - Classification. British Standards Institution, London.
6. BS EN 12208: 2000. Windows and doors – Watertightness - Classification. British Standards Institution, London.
7. BS EN 12210: 2000. Windows and doors – Resistance to wind load - Classification. British Standards Institution, London.
8. BS EN 14351-1:2006 Windows and doors – Product standard. British Standards Institution, London.



ANNEX A. Weathertightness test results

Pressure differential Pa	Air flow through the specimen m ³ /h	Air flow per unit area of the specimen m ³ /h.m ²	Air flow per m of opening joint on the specimen m ³ /h.m
50	12.68	4.99	2.00
100	17.36	6.83	2.74
150	21.36	8.41	3.37
200	24.71	9.72	3.90
250	28.13	11.07	4.44
300	31.15	12.26	4.91

Table A1. Air permeability under positive air pressure; test results

Pressure differential Pa	Air flow through the specimen m ³ /h	Air flow per unit area of the specimen m ³ /h.m ²	Air flow per m of opening joint on the specimen m ³ /h.m
50	20.79	8.18	3.28
100	37.14	14.62	5.86
150	52.30	20.58	8.25
200	67.43	25.53	10.63
250	80.21	31.56	12.65
300	93.59	36.83	14.76

Table A2. Air permeability under negative air pressure; test results

Pressure differential Pa	Average air flow per unit area of the specimen m ³ /h.m ²	Average air flow per m of opening joint on the specimen m ³ /h.m
50	6.59	2.64
100	10.73	4.30
150	14.50	5.81
200	17.63	7.27
250	21.32	8.55
300	24.55	9.84

Table A3. Averages of air permeabilities under positive and negative air pressures; test results

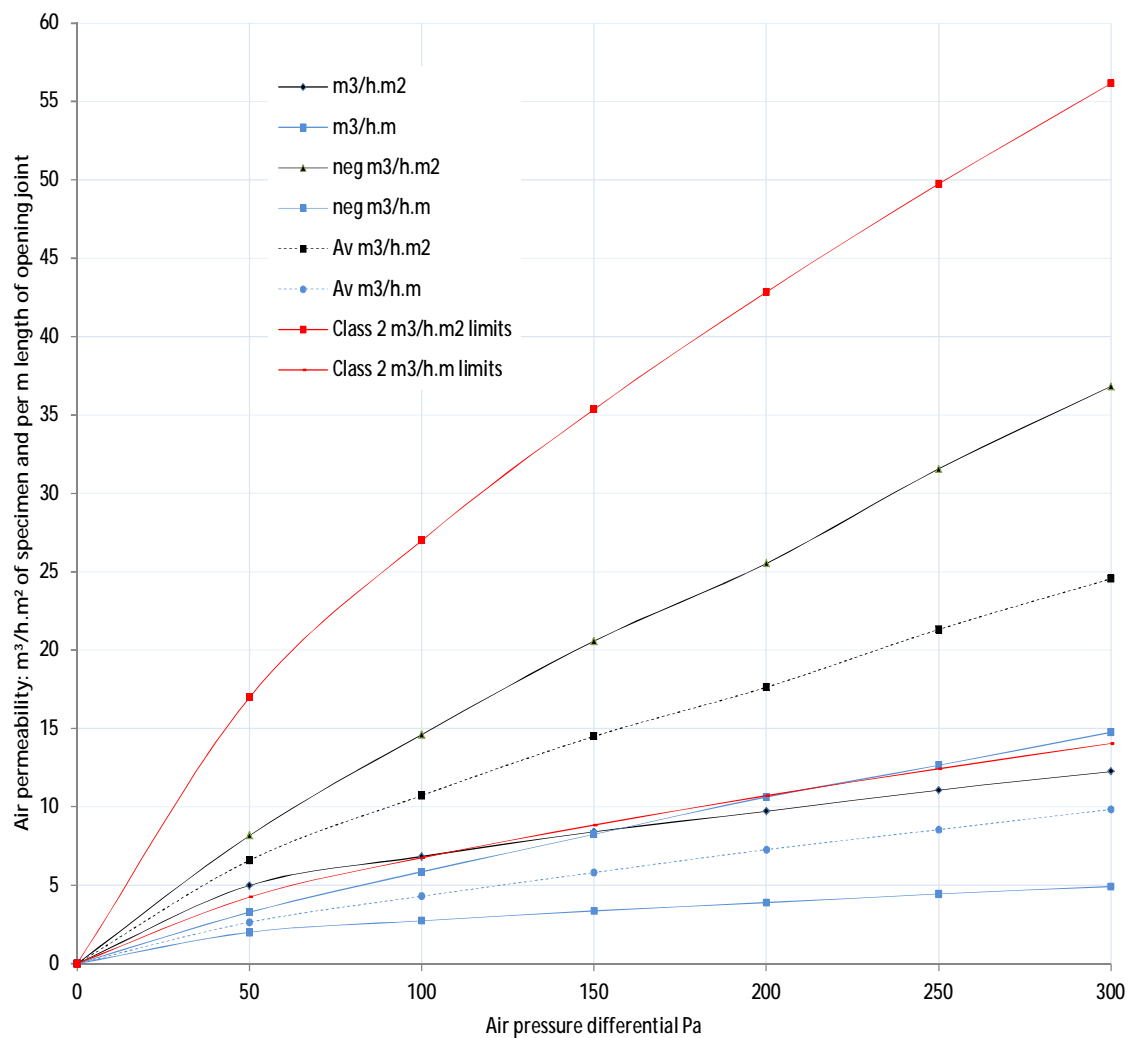
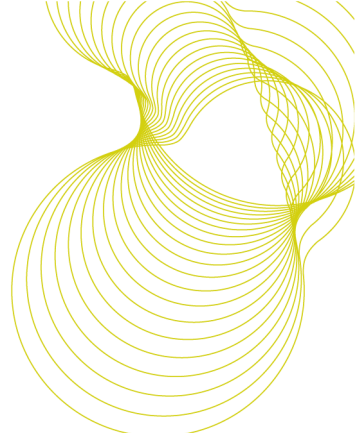
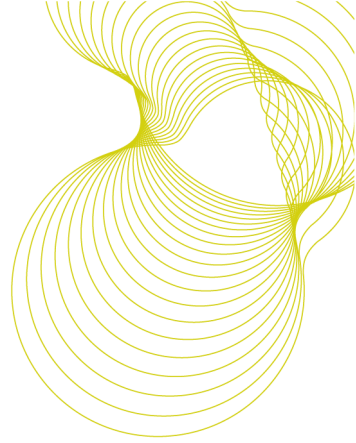


Figure A1. Test results: Air permeability under positive and negative air pressure; showing limits and averages of air permeabilities measured under positive and negative test pressures



Watertightness test

Pressure differential Pa	Duration Minutes	Water leaks
0	15	Nil
50	5	Nil
100	5	Nil
150	5	Nil

Test laboratory conditions: Air temperature 20°C. Test chamber air temperature 19.3°C
Air pressure 1017 mb. Relative humidity 53.6% at 20°C. Water temperature 17°C

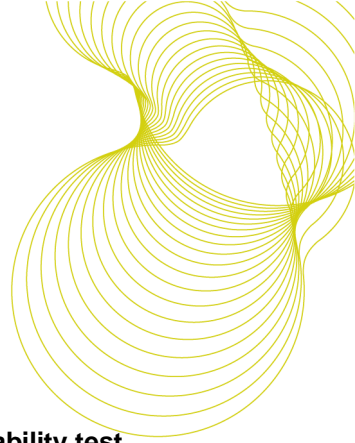
Table A4. Watertightness test results

Resistance to wind load – Deflection test at ± 2000 Pa

Position deflection measured	Positive pressure P1 to +2000 Pa		Negative pressure P1 to -2000 Pa	
	Deflection		Deflection	
	mm	defl./span	mm	defl./span
Left hand door leaf stile	7.36	1/299	7.33	1/300

Note: The deflection at the mid-point of a member is measured relative to its ends, e.g. with reference to Figure A3: Deflection at the mid-point = deflection at the mid-point – average of deflections at the two ends of the same member.

Table A5. Deflections measured on a frame member in the resistance to wind load test at ± 2000 Pa.



Resistance to wind load – Repeated pressure test including the second air permeability test

Repeated pressure	Damage or functional defects
50 cycles to P2 at ± 1000 Pa	None

Table A6. Damage or functional defects after repeated pressures to P2 at ± 1000 Pa

Second air permeability test under positive air pressures (part of resistance to wind load test)

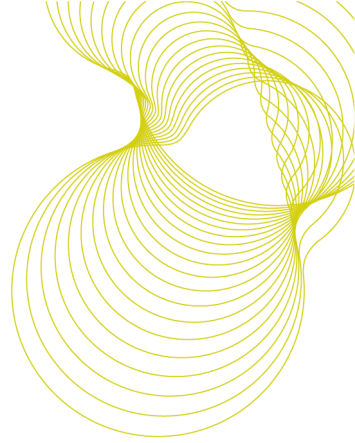
Pressure differential Pa	Air flow through the specimen m ³ /h	Air flow through specimen measured at first air permeability test m ³ /h	Comparison to the air permeability measured previously (see Table A1)
50	12.82	12.68	After the test pressures P1 and P2 were applied the amounts of air flowing through the test specimen were not significantly different to those measured previously
100	17.40	17.36	
150	21.65	21.36	
200	24.72	24.71	
250	28.13	28.13	
300	31.34	31.15	

Table A7. Second air permeability test results under positive air pressures

Second air permeability test under negative air pressures (part of resistance to wind load test)

Pressure differential Pa	Air flow through the specimen m ³ /h	Air flow through specimen measured at first air permeability test m ³ /h	Comparison to the air permeability measured previously (see Table A2)
50	20.84	20.79	After the test pressures P1 and P2 were applied the amounts of air flowing through the test specimen were not significantly different to those measured previously
100	37.26	37.14	
150	52.51	52.30	
200	67.57	67.43	
250	80.73	80.21	
300	94.71	93.59	

Table A8. Second air permeability test results under negative air pressures



Resistance to wind load - Safety test

Safety test	Condition after test
One pressure pulse to pressure: P3 at – then + 3000 Pa	No parts became detached and the test specimen remained closed

Table A9. Condition of the specimen after the safety test to P3 at ± 3000 Pa

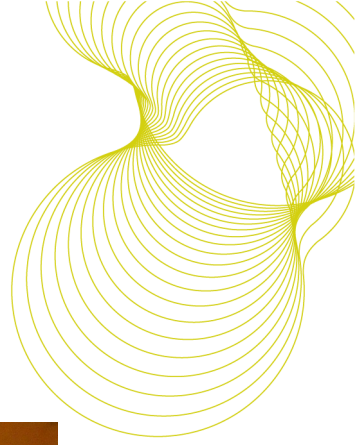


Figure A2. The test specimen installed in the BRE 'G' Weathertightness test rig

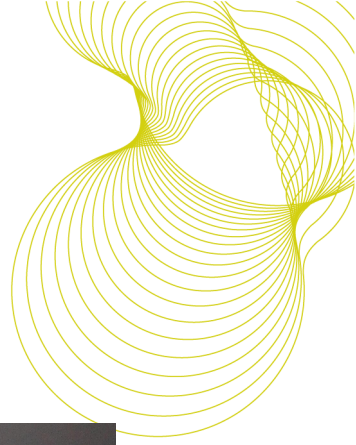
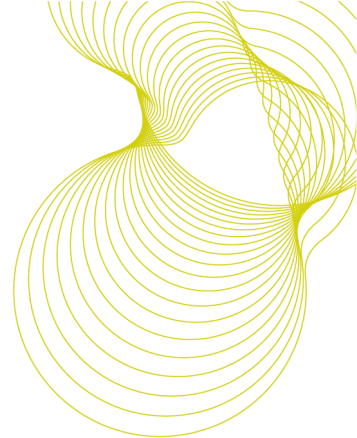


Figure A3. The test specimen showing points 1, 2 and 3 where deflections were measured.



=====REPORT ENDS=====