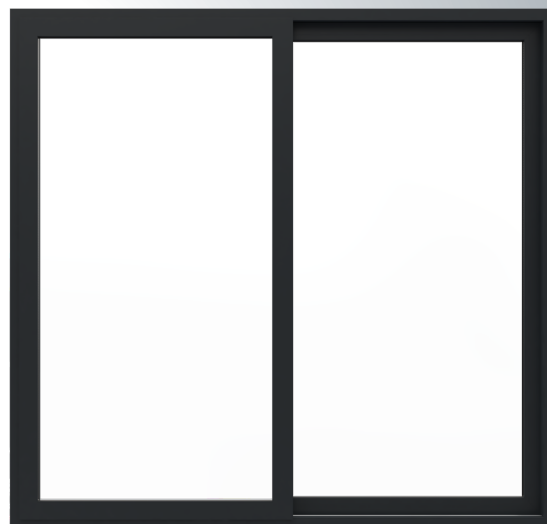
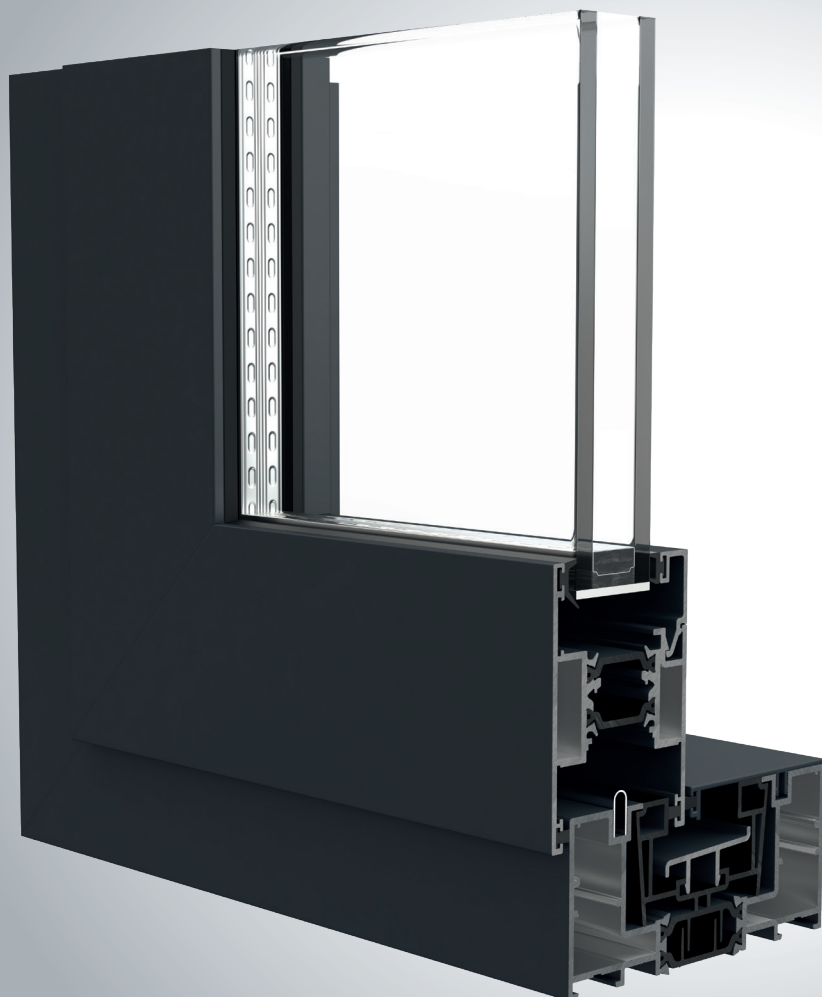
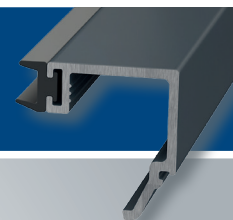


FEATURING SMART'S NEW
QUICK GLAZE BEAD



DESIGNING PRODUCT SOLUTIONS FOR

- ✦ Inline sliding and lift & slide options
- ✦ Slim interlock option
- ✦ Available in single and dual colour formats in a wide choice of finishes
- ✦ Option of colour matched accessories
- ✦ Suitable for use with auto slide opening mechanisms
- ✦ PAS24:2022 compliant multipoint locking options
- ✦ British Standard Kitemarked system achieving: KM 530838 PAS 24:2022
- ✦ Long life, low maintenance

Introducing... VISOGLIDE SERIES

The Visoglide range of high-quality sliding doors combines contemporary styling with outstanding performance.

Visoglide doors are perfect for sliding commercial entrances where large opening apertures are required, or as a statement sliding door for residential properties, where the doors maximise light and provide unimpeded panoramic views. All the system's main sections feature an extended polyamide thermal break that allows Visoglide doors to achieve U values from 1.6 to 1.4 W/m²K with a 1.0 centre pane (dependent on profiles selected).

Building on the proven success of the established Visoglide system, the range has now been expanded, opening up even more aesthetic and performance options.

Visoglide PLUS

The ultimate large format sliding door, Visoglide Plus has been designed to meet the requirements of the 2025 Building Regulations, with the system having been designed to deliver enhanced strength, thermal performance and weather resistance. Visoglide Plus features Smart's innovative co-extruded glazing gasket, which means the profiles and beads are supplied with the glazing gasket pre-extruded into the profile, enabling fast and efficient fabrication installation.

- ◆ **Combines outstanding strength, weather and thermal performance with elegant sight lines**
- ◆ **U-values down to 1.4W/m²K**

FEATURES AND SPECIFICATIONS

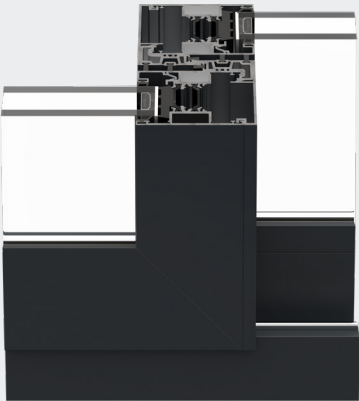
- ◆ 1.4 W/m²K (1.0 centre panel)
- ◆ Meets limiting value for existing dwellings
- ◆ 1.1 W/m²K (0.7 centre panel)
- ◆ Exceeds notional value for new build
- ◆ PAS24:2022
- ◆ BS Kitemark
- ◆ Quick Glaze Bead
- ◆ Co-extruded gasket sash
- ◆ Slim interlock

*U Values based on door 2500mm x 2725mm

TECHNICAL PERFORMANCE

U value (with 1.0 CP)	U value (with 0.7 CP)	Air	Water	Wind	Glass (mm)	Document L	Security	Frame Width (mm)	Frame Depth (mm)
1.4 W/m²K	1.1 W/m²K	Class 3, 600Pa	Class 7a, 300Pa	Class AE, 2400Pa	up to 38mm	Yes	PAS24:2022	52mm	102.5

THRESHOLD DETAIL

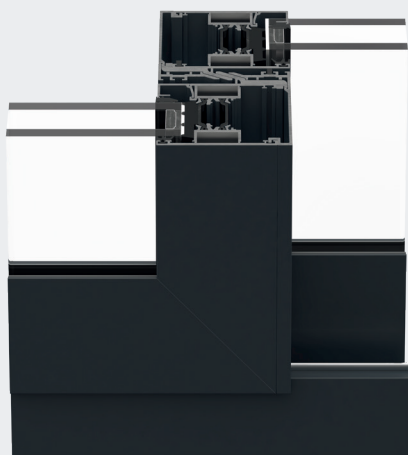


MEETING STYLE DETAIL

VG520

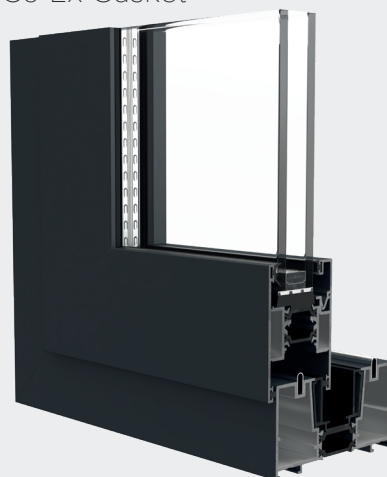


THRESHOLD DETAIL VG520



MEETING STYLE DETAIL VG520

VG920G Co-Ex Gasket



THRESHOLD DETAIL VG920G



MEETING STYLE DETAIL VG920G

Visoglide Plus HYBRID

Delivering a great combination of strength, elegance and performance, this system incorporates the original Visoglide outer frame to deliver excellent value. Featuring Smart's co-extruded glazing gasket, with the profiles and beads supplied with the glazing gasket pre-extruded into the profile, fabrication and installation are also fast and efficient.

♦ **Excellent thermal and weather performance**

♦ **U-value of 1.6W/m²K**

FEATURES AND SPECIFICATIONS

- ♦ 1.6 W/m²K (1.0 centre panel)
- ♦ 1.3 W/m²K (0.7 centre panel)
- ♦ PAS24:2022
- ♦ BS Kitemark
- ♦ Document L compliant
- ♦ Option to use Quick Glaze Bead
- ♦ Option to use Co-extruded gasket sash
- ♦ Slim interlock

TECHNICAL PERFORMANCE

U value (with 1.0 CP)	U value (with 0.7 CP)	Air	Water	Wind	Glass (mm)	Document L	Security	Frame Width (mm)	Frame Depth (mm)
1.4 W/m ² K	1.3 W/m ² K	Class 3, 600Pa	Class 7a, 300Pa	Class AE, 2400Pa	up to 38mm	Yes	PAS24:2022	52mm	102.5

Visoglide ORIGINAL

The original Visoglide system, this classic door features in projects across the length and breadth of the UK. Representing outstanding value, the highly competitive Visoglide Original sliding door offers proven performance, reliability and security.

- ◆ *Classic design proven in projects nationwide.*
- ◆ *Highly competitive system delivers value and performance.*

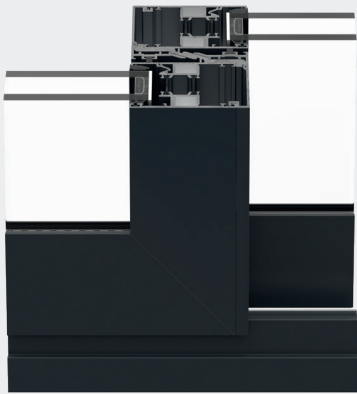
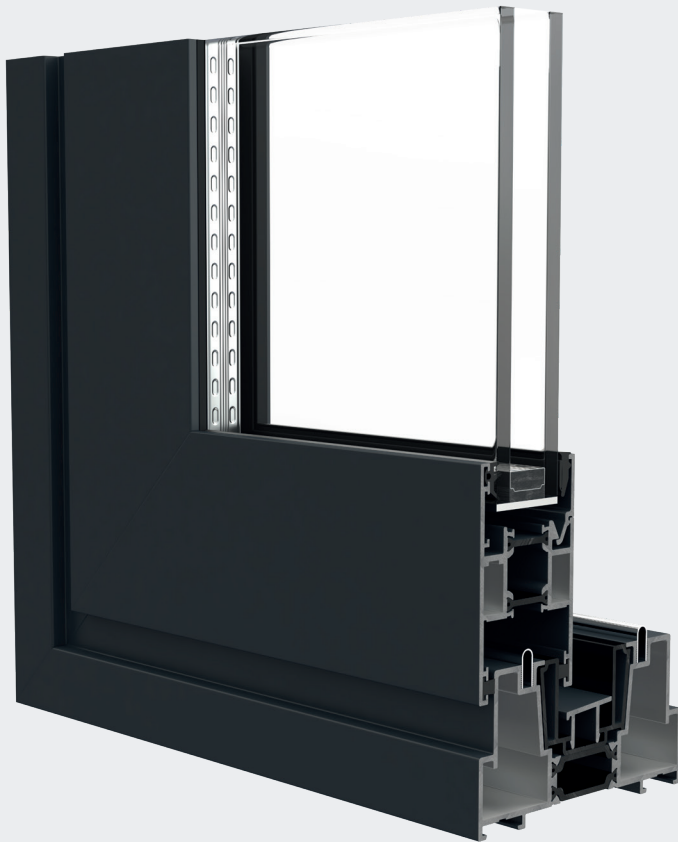
FEATURES AND SPECIFICATIONS

- ◆ 1.6 Wm²K (1.0 centre panel)
- ◆ Document L compliant
- ◆ Option for Quick Glaze Bead

TECHNICAL PERFORMANCE

U value (with 1.0 CP)	Air	Water	Wind	Glass (mm)	Document L	Security	Frame Width (mm)	Frame Depth (mm)
1.6 W/m ² K	No Test Data	No Test Data	No Test Data	up to 29mm	Yes	Multipoint locking	52mm	102.5

THRESHOLD DETAIL



MEETING STYLE DETAIL